

CARLTON WARE NEWSLETTER #37

From
Ian Harwood & Jerome Wilson

JANUARY 2007

For the start of a new year, we thought that we would cheer up all our northern hemisphere readers with a pattern featuring an element we do not see this time of the year, a rainbow! Of course, our Australian readers would also like to see this weather feature, as it would mean that they were receiving some much needed rain! However, it seems that in both Carlton Ware and (currently) the weather this pattern can be called "rare"!



Rainbow Fan 32cm charger pattern 3699 gloss orange

The **Rainbow Fan** pattern is one of the most sort after patterns in Carlton Ware and, by looking at the charger above, it is easy to see why. It is also easy to see how this pattern received its (*non factory*) name, due to the rainbow swirling from top to bottom, even though there are only 4 colours in the rainbow!

The second element of the pattern is the fan, which also has a rainbow style pattern, however, instead of colours, it is made up of geometric bands. The rainbow and the fan elements are interwoven with an assortment of brightly enameled flowers that definitely do contain all the colours of the rainbow and then some! Finally, there is a delightful broken border pattern that can be seen around the rim of the charger above and the top of the vases below; on the tea caddy the border can be seen used on the lid.



Rainbow Fan 20cm 406 vase, pattern 3700 mottled turquoise (front & reverse)

There are 4 difference colourways in this pattern:

- Pattern **3699** – gloss orange
- Pattern **3700** – gloss mottled turquoise
- Pattern **3713** – gloss lustre blue
- Pattern **3721** – gloss light blue (no picture)



Rainbow Fan 19cm 456 vase, pattern 3699 gloss orange
Rainbow Fan tea caddy pattern 3713 lustre blue

Of Chargers and other things
by Barry & Elaine Girling

The fact that a wall charger can add another dimension to a Carlton Ware collection is undoubtedly true but I am afraid that personally we have come rather late to this conclusion. Although we have seen some fine examples over the years, perhaps a lack of space, or dare we say, full appreciation of the marque has tempered our thoughts.

Like the 'Best Ware' pieces the golden period seems to be the 1920's and 30's. They appear to come in two sizes, the more common diameter of 32cm or so and the rather less common of 39cm or thereabouts. We find these artefacts finished in either lustre, such as **Heron and Magical Tree 4160**, matt such as **Bell 3786** (green), the floral embossed **ROCK GARDEN** pattern or Handcraft such as **Carnival 3305**.



32cm chargers **Bell** pattern **3786** matt green and **ROCK GARDEN**

From reference to auction catalogues and the like it doesn't seem that a charger was produced in all the major Art Deco patterns of the period. If this supposition were correct it would be interesting to know the reasoning and also whether the same pattern was applied to both sizes of charger. Presumably the method of production was similar to the stunning best ware vases of the same period.

As to valuation where exactly do they sit? For if a vase is more valuable than a bowl, a ginger jar more valuable than a vase, how does the charger fit the equation? Add to the mix, condition, size, and uniqueness of pattern and perhaps any logic goes out the window.

There are many superb patterns from say the Handcraft **RUSSIAN 3567** with its roundel design to the underrated **Fantasia 3388** (blue). However, it is the 'Handcraft style' range that seems the most intriguing, one such design on the matt format being **VICTORIAN LADY 3451**. This plaque is sometimes found depicting a large lady and on other occasions with a smaller female version with corresponding adjustments of design. By reference to those we have seen either first hand or via auctioneers catalogues no two chargers are the same. Even with two ladies of comparable size! There are subtle nuances that define originality such as colour and number of flowers and shrubs. The painters were obviously allowed considerable licence in application of this freehand style.



Four **VICTORIAN LADY** 39cm chargers pattern **3451**
 Note multiple pattern differences on all chargers including size of lady, cloud formation, garden flowers, and colours used.

Like most Carlton Ware special pieces, chargers are not exactly plentiful but do seem to appear at auction or privately on a fairly regular basis. There have been floral examples available such as **DAISY 3693**, **ANEMONE 3694**, **HOLLYHOCKS 3818** (mottled green) and **FLOWER & FALLING LEAF 3948** (matt green). Art deco such as **Floral Comets 3422** (blue), **Jazz Stitch 3655**, **Bell 3786** (matt green), and others such as **Devils Copse 3787** (blue) and **RABBITS AT DUSK 4247** (pink). Also in recent years one or two previously unknown designs have appeared.



32cm chargers **DAISY** pattern **3693** matt blue and **RABBITS AT DUSK** pattern **4249** gloss orange



Floral Comets 39cm chargers pattern **3387** matt green and **3405** matt blue

In common generally with Handcraft another example of artistic expression can be found on the **CLEMATIS 3525**. Each piece is virtually a “one off” owing to the liberal parameters the artists were given and all the more fascinating because of it. Paintresses and gilders marks can be found on pieces and recorded in the hope of ‘matching up’ but sadly it is unlikely that we will ever know the ladies names. We have been very interested to see for the first time, designers’ names given in some recent catalogues. A thought on production runs; we have always wondered for instance how many “best ware” pieces of identical nature were produced. It is probably difficult to generalise but take for example a **VICTORIAN LADY** charger or a **Bell** vase **3788** (Ruby Lustre). There really does seem to be such a few known pieces in existence; couple that with unknowns, delete a large proportion lost over the years and it becomes interesting. Could the factory have manufactured as few as a hundred pieces of some of these expensive and complicated designs? This finite source should perhaps concentrate the minds of the existing custodians. A bonus is to find the pieces so generously marked on the base. If it were possible to relate the batch/order numbers to documentation it might well assist in volume of production, but this appears an impossibility.



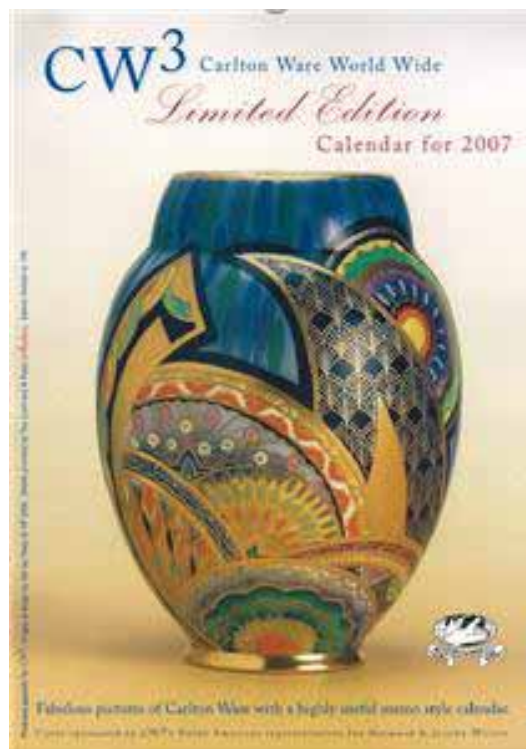
CLEMATIS 18cm jug pattern **3525**

Another variation of the **VICTORIAN LADY** 39cm charger pattern **3451**

We well remember being in Stoke-on-Trent some years ago and talking to the then owner of the factory, who we seem to remember, told us that he acquired the pottery in a rundown state from the Receiver in 1989. He kindly showed us round and spoke of his plans to convert the premises into student accommodation and industrial units. He also pointed out where the factory records had been housed and to our dismay informed us that they had virtually all been consigned to the skip! However, this may be only one of the reasons why there seems to be so many unanswered questions. More information on the history of the factory, its employees and products is needed and I'm sure would be welcomed by existing collectors.

Limited Edition 2007 Carlton Ware Calendar – still in stock

Just a reminder that if you have not already bought your **Limited Edition 2007 Carlton Ware Calendar** you should do so right away before they are all sold out! The calendar is approximately 12” x 16” and is printed on high quality paper in a limited edition of 150 copies. Each page has a picture of different items of Carlton Ware and is complemented by a month per view calendar containing public holidays for the UK, Australia, Canada, South Africa, New Zealand, and the USA. The calendar is supplied rolled in a tube and the price of £12.95 includes postage worldwide. Don't miss out, click here to get your copy now! or go to the CW3 web site at www.carltonwareworldwide.com where you can find full details.



Acknowledgments: We would like to thank **Barry & Elaine Girling** for their most interesting article on Chargers; also **Peter Meyer in Australia** for allowing us to use the picture of his gloss orange **Rainbow Fan** charger and **Diana Kearns in the U.K.** for supplying pictures of her mottled turquoise **Rainbow Fan** vase.

Ian Harwood & Jerome Wilson

We can be contacted at:

Phone: (403) 243-8172

eMail: jeromian@shaw.ca